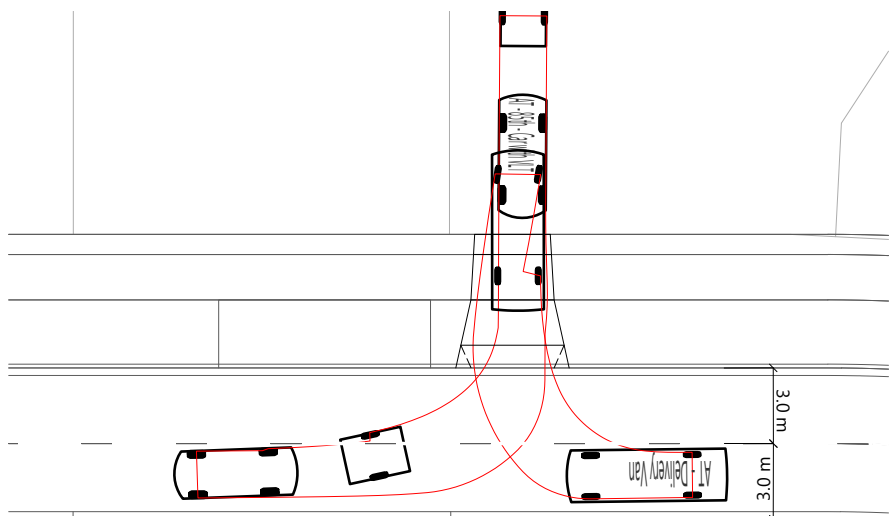


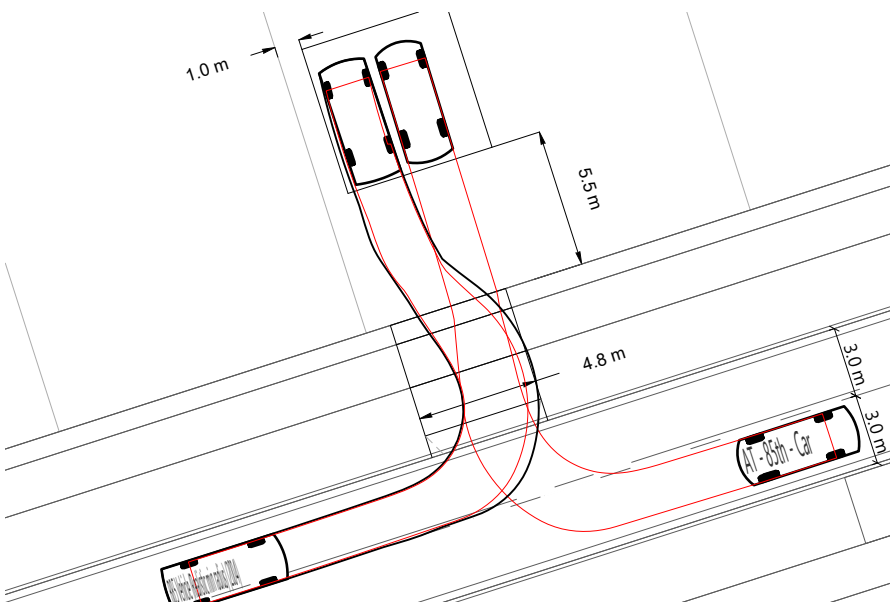
VEHICLE CROSSING - TYPICAL LONGSECTION TYPE A & TYPE B

Scale: 1:75



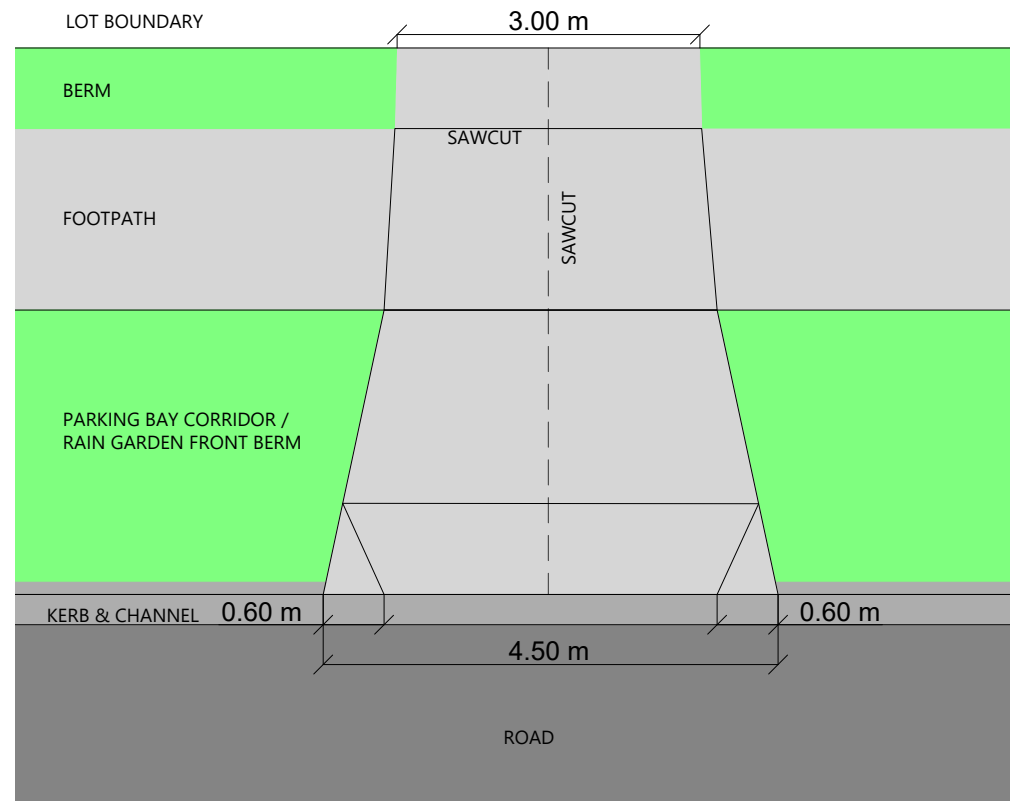
VEHICLE CROSSING TYPE A SUITABLE FOR LOTS WITH < 14.0 M FRONTAGE

Scale: 1:75



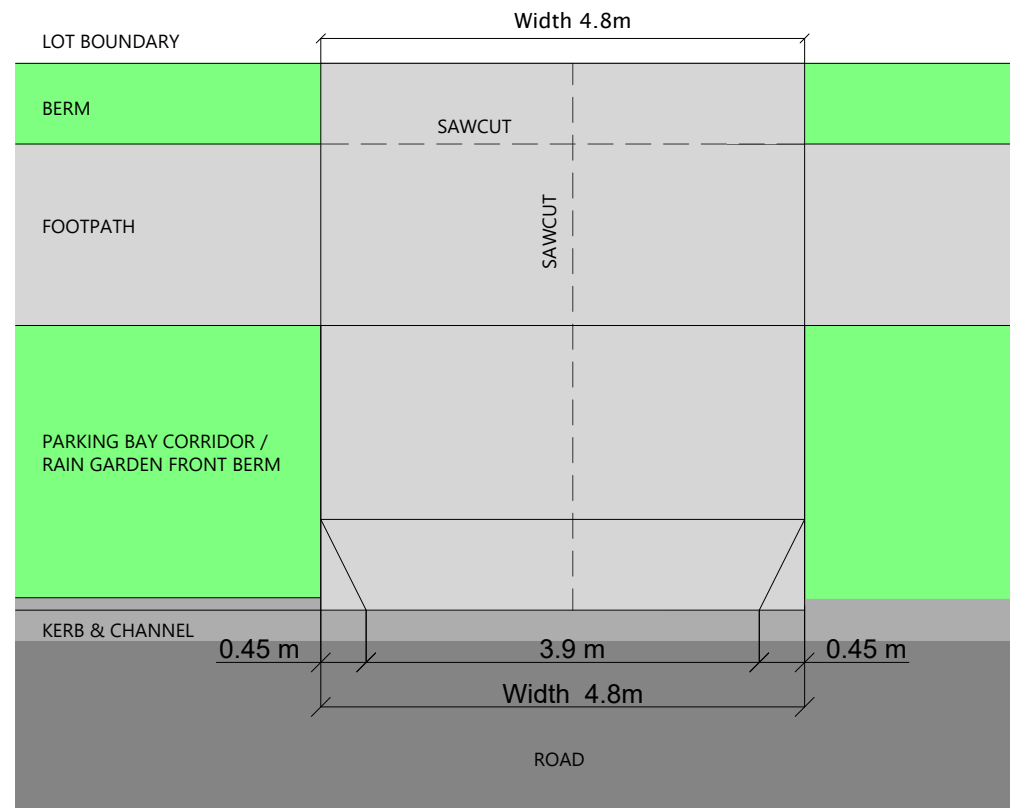
VEHICLE CROSSING TYPE B SUITABLE FOR LOTS WITH > 14.0 M FRONTAGE

Scale: 1:75



VEHICLE CROSSING TYPE A SUITABLE FOR LOTS WITH < 14.0 M FRONTAGE

Scale: 1:75

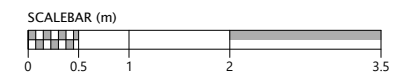


VEHICLE CROSSING TYPE B SUITABLE FOR LOTS WITH > 14.0 M FRONTAGE

Scale: 1:75

NOTES

1. ALL LOTS FRONTING ONTO LOCAL ROADS WITH A FRONT BOUNDARY WIDTH OF LESS THAN 14m SHALL CONSTRUCT A TYPE A VEHICLE CROSSING.
2. ALL LOTS FRONTING ONTO LOCAL ROADS WITH A FRONT BOUNDARY WIDTH OF 14m OR GREATER SHALL CONSTRUCT EITHER A TYPE A VEHICLE CROSSING OR A TYPE B VEHICLE CROSSING.
3. ALL LOTS FRONTING ONTO COLLECTOR ROADS SHALL CONSTRUCT A TYPE B VEHICLE CROSSING.
4. ALL CORNER LOTS SHALL CONSTRUCT A TYPE B VEHICLE CROSSING.



| REVISION DETAILS | INT | DATE | SURVEYED | | |
|-------------------------|-----|----------|----------|----|---------------------------------------------------------|
| 1 AT COMMENTS AMENDMENT | EY | SEP 2020 | DESIGNED | KH | SIDWELL ROAD MILLDALE AUCKLAND WOODS.CO.NZ |
| | | | DRAWN | EY | |
| | | | CHECKED | PL | |
| | | | APPROVED | JW | |



MILLDALE
VEHICLE CROSSINGS TYPES



| STATUS | ISSUED FOR DISCUSSION | REV |
|---------|-----------------------|-----|
| SCALE | AS SHOWN | 1 |
| COUNCIL | AUCKLAND COUNCIL | |
| DWG NO | P17-005-900A-RD | |